

# KING

## HOME 502 E



2BD.66

**2 Bedroom  
2 Bathroom**

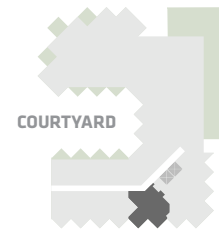
**Total Living:  
918 ft<sup>2</sup>**

Interior Living:  
847 ft<sup>2</sup>

Exterior Living:  
72 ft<sup>2</sup>

<b>LIVING</b>	11' 8" X 10' 1"
<b>DINING</b>	10' 2" X 7' 6"
<b>MASTER BD</b>	9' 2" X 14' 4"
<b>BEDROOM 2</b>	10' 6" X 11' 2"
<b>BALCONY</b>	11' 0" X 4' 11"

KING STREET WEST



**EAST MOUNTAIN KEYPLAN**



All dimensions and specifications are approximate. Certain plans are reverse or mirror image. Balcony square footages are estimated and may vary from that stated. Please see Sales Representative for details. Furniture not included. Refer to key plan for unit location and orientation. E. 6 O.E.

# KING

## HOME 601 E



2BD.03

**2 Bedroom  
2 Bathroom**

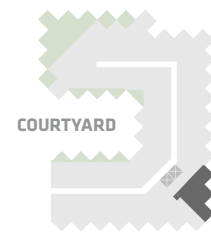
**Total Living:  
853 ft<sup>2</sup>**

Interior Living:  
786 ft<sup>2</sup>

Exterior Living:  
67 ft<sup>2</sup>

<b>LIVING</b>	7' 7" X 9' 9"
<b>DINING</b>	8' 1" X 7' 9"
<b>MASTER BD</b>	10' 11" X 9' 10"
<b>BEDROOM 2</b>	9' 8" X 8' 9"
<b>BALCONY</b>	4' 11" X 9' 9"

KING STREET WEST



**EAST MOUNTAIN KEYPLAN**



All dimensions and specifications are approximate. Certain plans are reverse or mirror image. Balcony square footages are estimated and may vary from that stated. Please see Sales Representative for details. Furniture not included. Refer to key plan for unit location and orientation. E. 6 O.E.

# KING

## HOME 602 E



2BD.04

**2 Bedroom  
2 Bathroom**

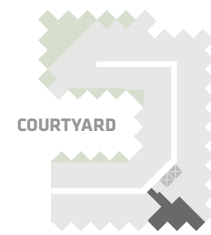
**Total Living:  
960 ft<sup>2</sup>**

Interior Living:  
894 ft<sup>2</sup>

Exterior Living:  
67 ft<sup>2</sup>

<b>LIVING</b>	9' 9" X 8' 11"
<b>DINING</b>	7' 2" X 14' 4"
<b>MASTER BD</b>	9' 10" X 11' 2"
<b>BEDROOM 2</b>	9' 3" X 10' 3"
<b>BALCONY</b>	9' 9" X 4' 11"

KING STREET WEST



COURTYARD

**EAST MOUNTAIN KEYPLAN**



All dimensions and specifications are approximate. Certain plans are reverse or mirror image. Balcony square footages are estimated and may vary from that stated. Please see Sales Representative for details. Furniture not included. Refer to key plan for unit location and orientation. E. 6 O.E.

# KING

## HOME 619 E



2BD.18

**2 Bedroom  
2 Bathroom**

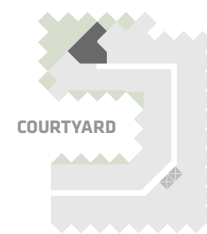
**Total Living:  
1064 ft<sup>2</sup>**

Interior Living:  
765 ft<sup>2</sup>

Exterior Living:  
299 ft<sup>2</sup>

<b>LIVING</b>	10' 10" X 10' 1"
<b>DINING</b>	10' 2" X 7' 11"
<b>MASTER BD</b>	9' 11" X 10' 2"
<b>BEDROOM 2</b>	9' 6" X 11' 2"
<b>TERRACE</b>	20' 4" X 6' 8"

KING STREET WEST



**EAST MOUNTAIN KEYPLAN**



All dimensions and specifications are approximate. Certain plans are reverse or mirror image. Balcony square footages are estimated and may vary from that stated. Please see Sales Representative for details. Furniture not included. Refer to key plan for unit location and orientation. E. & O.E.

# KING

## HOME 701 E



2BD.03

**2 Bedroom  
2 Bathroom**

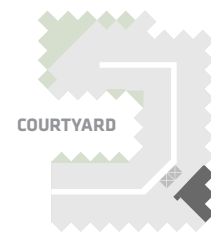
**Total Living:  
853 ft<sup>2</sup>**

Interior Living:  
787 ft<sup>2</sup>

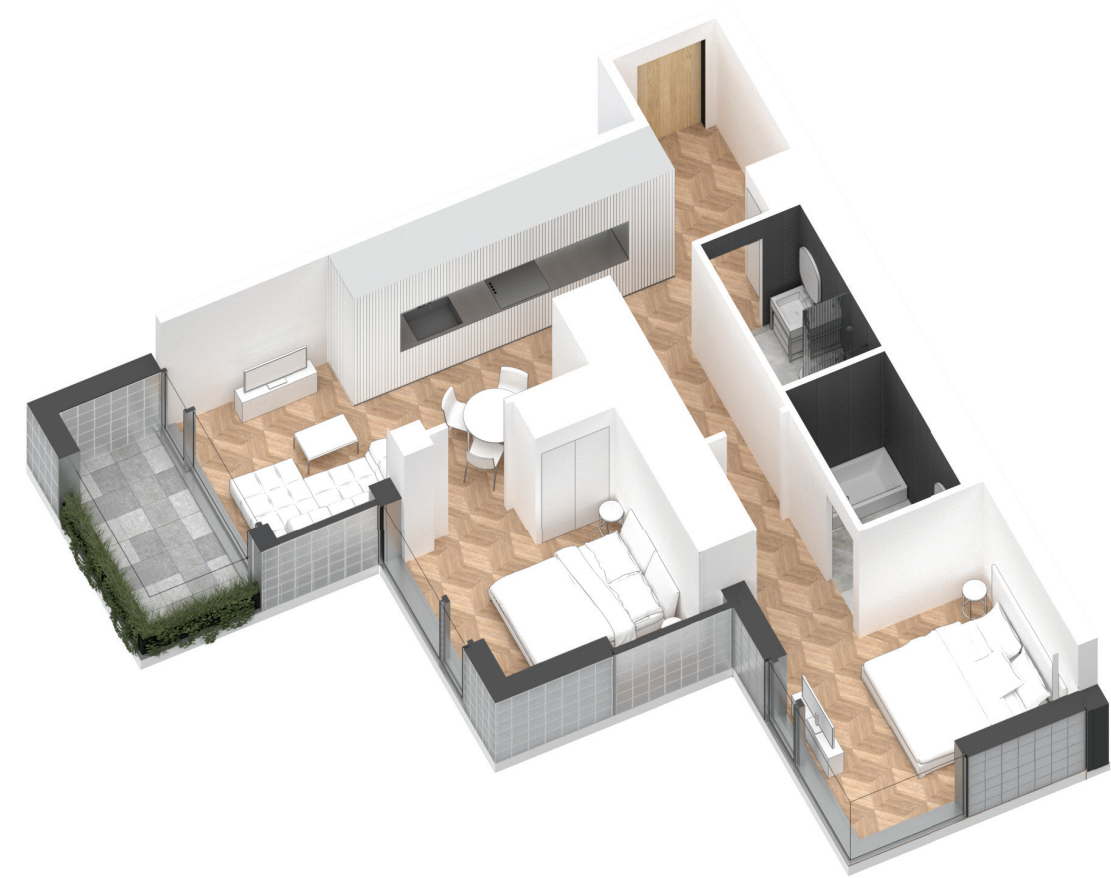
Exterior Living:  
67 ft<sup>2</sup>

<b>LIVING</b>	7' 7" X 9' 9"
<b>DINING</b>	8' 1" X 7' 9"
<b>MASTER BD</b>	10' 11" X 9' 10"
<b>BEDROOM 2</b>	9' 8" X 8' 9"
<b>BALCONY</b>	4' 11" X 9' 9"

KING STREET WEST



**EAST MOUNTAIN KEYPLAN**



All dimensions and specifications are approximate. Certain plans are reverse or mirror image. Balcony square footages are estimated and may vary from that stated. Please see Sales Representative for details. Furniture not included. Refer to key plan for unit location and orientation. E. & O.E.

# KING

## HOME 702 E



2BD.04

**2 Bedroom  
2 Bathroom**

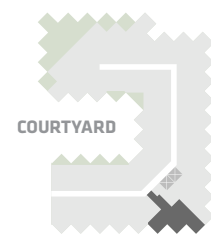
**Total Living:  
959 ft<sup>2</sup>**

Interior Living:  
893 ft<sup>2</sup>

Exterior Living:  
67 ft<sup>2</sup>

<b>LIVING</b>	9' 9" X 8' 11"
<b>DINING</b>	7' 2" X 14' 4"
<b>MASTER BD</b>	9' 10" X 11' 2"
<b>BEDROOM 2</b>	9' 3" X 10' 3"
<b>BALCONY</b>	9' 9" X 4' 11"

KING STREET WEST



COURTYARD

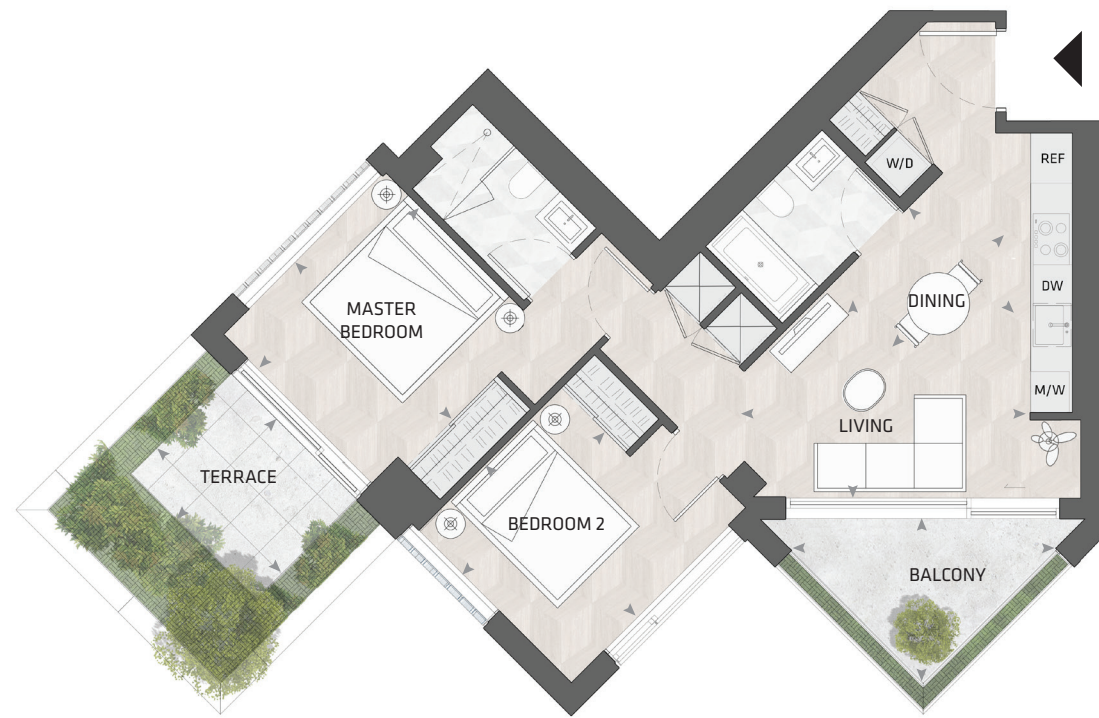
**EAST MOUNTAIN KEYPLAN**



All dimensions and specifications are approximate. Certain plans are reverse or mirror image. Balcony square footages are estimated and may vary from that stated. Please see Sales Representative for details. Furniture not included. Refer to key plan for unit location and orientation. E. 6 O.E.

# KING

## HOME 716 E



2BD.21

**2 Bedroom  
2 Bathroom**

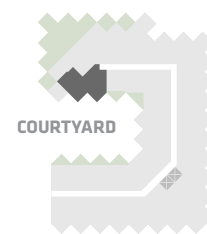
**Total Living:  
1059 ft<sup>2</sup>**

Interior Living:  
804 ft<sup>2</sup>

Exterior Living:  
255 ft<sup>2</sup>

<b>LIVING</b>	13' 9" x 8' 10"
<b>DINING</b>	8' 0" x 6' 1"
<b>MASTER BD</b>	11' 1" x 10' 9"
<b>BEDROOM 2</b>	9' 8" x 10' 6"
<b>BALCONY</b>	13' 0" x 7' 9"
<b>TERRACE</b>	6' 8" x 8' 3"

KING STREET WEST



**EAST MOUNTAIN KEYPLAN**



All dimensions and specifications are approximate. Certain plans are reverse or mirror image. Balcony square footages are estimated and may vary from that stated. Please see Sales Representative for details. Furniture not included. Refer to key plan for unit location and orientation. E. 6 O.E.

# KING

## HOME 817 E



2BD.25

**2 Bedroom  
2 Bathroom**

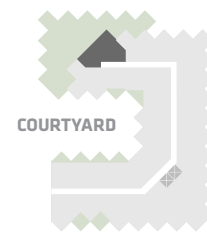
**Total Living:  
1114 ft<sup>2</sup>**

Interior Living:  
816 ft<sup>2</sup>

Exterior Living:  
298 ft<sup>2</sup>

<b>LIVING</b>	10' 6" X 12' 0"
<b>DINING</b>	7' 5" X 9' 8"
<b>MASTER BD</b>	9' 11" X 9' 10"
<b>BEDROOM 2</b>	12' 0" X 10' 7"
<b>TERRACE</b>	20' 5" X 6' 8"

KING STREET WEST



COURTYARD

**EAST MOUNTAIN KEYPLAN**



All dimensions and specifications are approximate. Certain plans are reverse or mirror image. Balcony square footages are estimated and may vary from that stated. Please see Sales Representative for details. Furniture not included. Refer to key plan for unit location and orientation. E. & O.E.



# KING

## HOME 707 E



2BD.05

**2 Bedroom  
2 Bathroom**

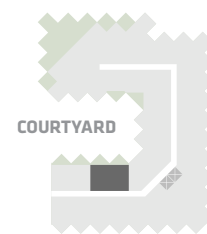
**Total Living:  
968 ft<sup>2</sup>**

Interior Living:  
791 ft<sup>2</sup>

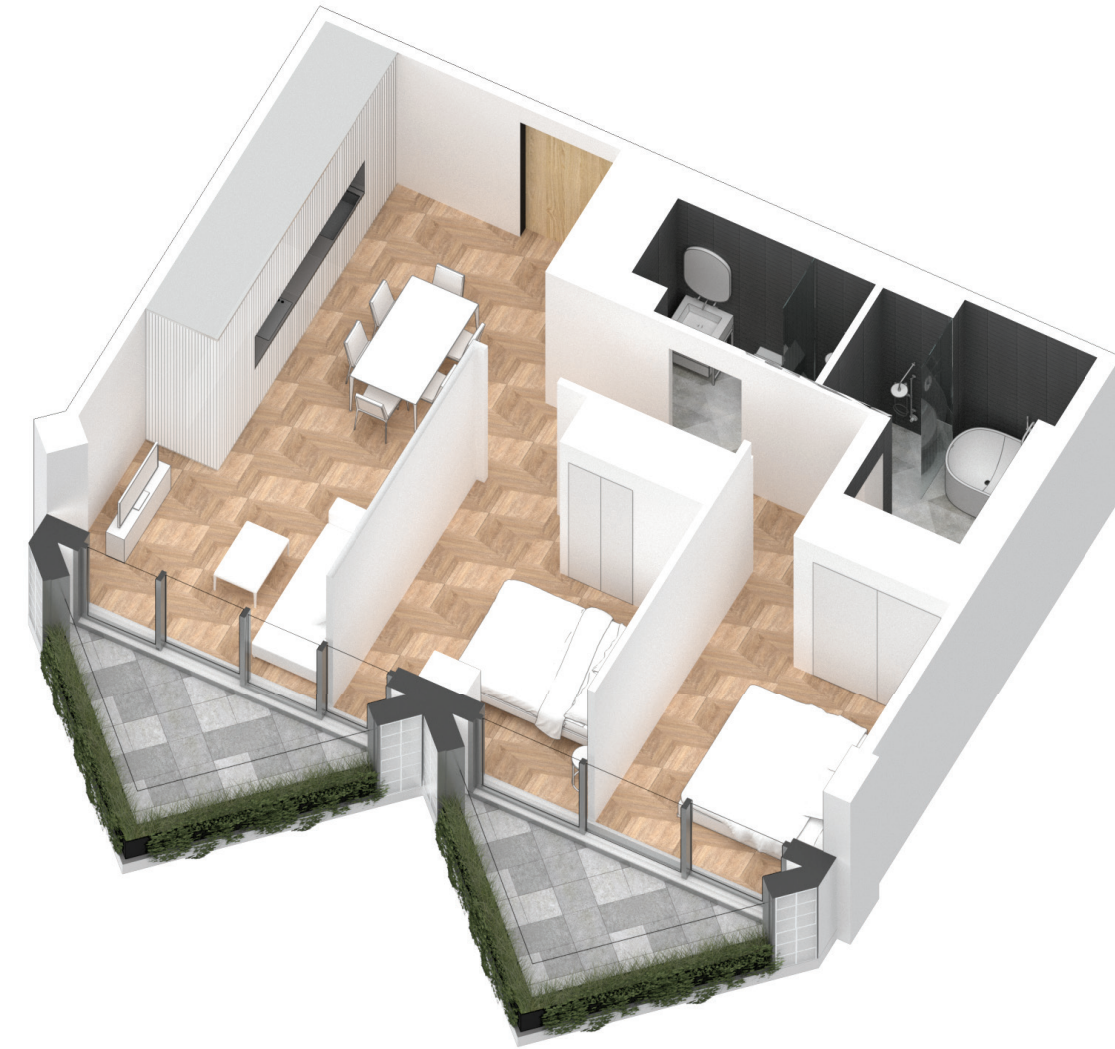
Exterior Living:  
177 ft<sup>2</sup>

<b>LIVING</b>	11' 6" x 7' 8"
<b>DINING</b>	8' 6" x 14' 3"
<b>MASTER BD</b>	9' 9" x 9' 10"
<b>BEDROOM 2</b>	10' 11" x 9' 4"
<b>BALCONY</b>	13' 0" x 7' 9"

KING STREET WEST



**EAST MOUNTAIN KEYPLAN**



All dimensions and specifications are approximate. Certain plans are reverse or mirror image. Balcony square footages are estimated and may vary from that stated. Please see Sales Representative for details. Furniture not included. Refer to key plan for unit location and orientation. E. & O.E.

# KING

## HOME 717 E



2BD.20

**2 Bedroom  
2 Bathroom**

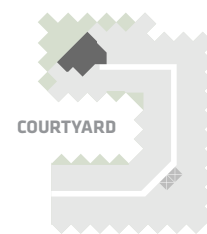
**Total Living:  
1230 ft<sup>2</sup>**

Interior Living:  
943 ft<sup>2</sup>

Exterior Living:  
287 ft<sup>2</sup>

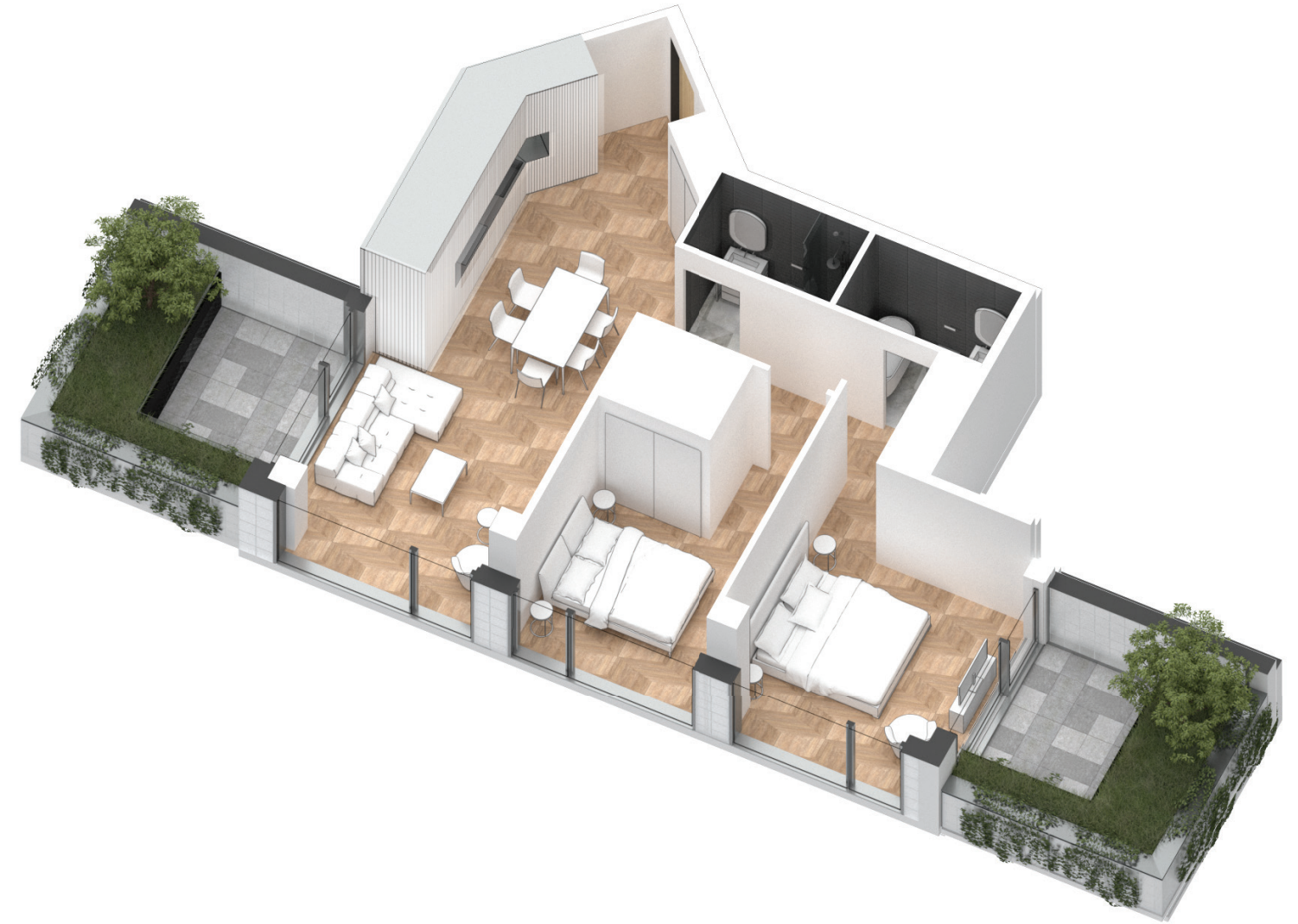
<b>LIVING</b>	13' 1" x 12' 0"
<b>DINING</b>	10' 3" x 11' 5"
<b>MASTER BD</b>	11' 8" x 12' 1"
<b>BEDROOM 2</b>	10' 4" x 8' 10"
<b>TERRACE</b>	6' 8" x 9' 1"

KING STREET WEST



COURTYARD

**EAST MOUNTAIN KEYPLAN**



All dimensions and specifications are approximate. Certain plans are reverse or mirror image. Balcony square footages are estimated and may vary from that stated. Please see Sales Representative for details. Furniture not included. Refer to key plan for unit location and orientation. E. & O.E.

# KING

## HOME 801 E



2BD.03

**2 Bedroom  
2 Bathroom**

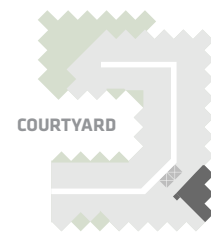
**Total Living:  
854 ft<sup>2</sup>**

Interior Living:  
789 ft<sup>2</sup>

Exterior Living:  
65 ft<sup>2</sup>

<b>LIVING</b>	7' 7" X 9' 9"
<b>DINING</b>	8' 1" X 7' 9"
<b>MASTER BD</b>	10' 11" X 9' 10"
<b>BEDROOM 2</b>	9' 8" X 8' 9"
<b>BALCONY</b>	4' 11" X 9' 9"

KING STREET WEST



**EAST MOUNTAIN KEYPLAN**



All dimensions and specifications are approximate. Certain plans are reverse or mirror image. Balcony square footages are estimated and may vary from that stated. Please see Sales Representative for details. Furniture not included. Refer to key plan for unit location and orientation. E. & O.E.

# KING

## HOME 802 E



2BD.04

**2 Bedroom  
2 Bathroom**

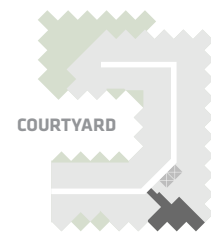
**Total Living:  
961 ft<sup>2</sup>**

Interior Living:  
896 ft<sup>2</sup>

Exterior Living:  
65 ft<sup>2</sup>

<b>LIVING</b>	9' 9" X 8' 11"
<b>DINING</b>	7' 2" X 14' 4"
<b>MASTER BD</b>	9' 10" X 11' 2"
<b>BEDROOM 2</b>	9' 3" X 10' 3"
<b>BALCONY</b>	9' 9" X 4' 11"

KING STREET WEST



**EAST MOUNTAIN KEYPLAN**



All dimensions and specifications are approximate. Certain plans are reverse or mirror image. Balcony square footages are estimated and may vary from that stated. Please see Sales Representative for details. Furniture not included. Refer to key plan for unit location and orientation. E. 6 O.E.

# KING

## HOME 807 E



2BD.05

**2 Bedroom  
2 Bathroom**

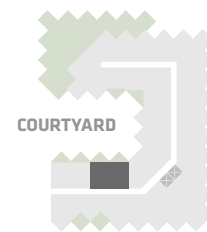
**Total Living:  
968 ft<sup>2</sup>**

Interior Living:  
791 ft<sup>2</sup>

Exterior Living:  
177 ft<sup>2</sup>

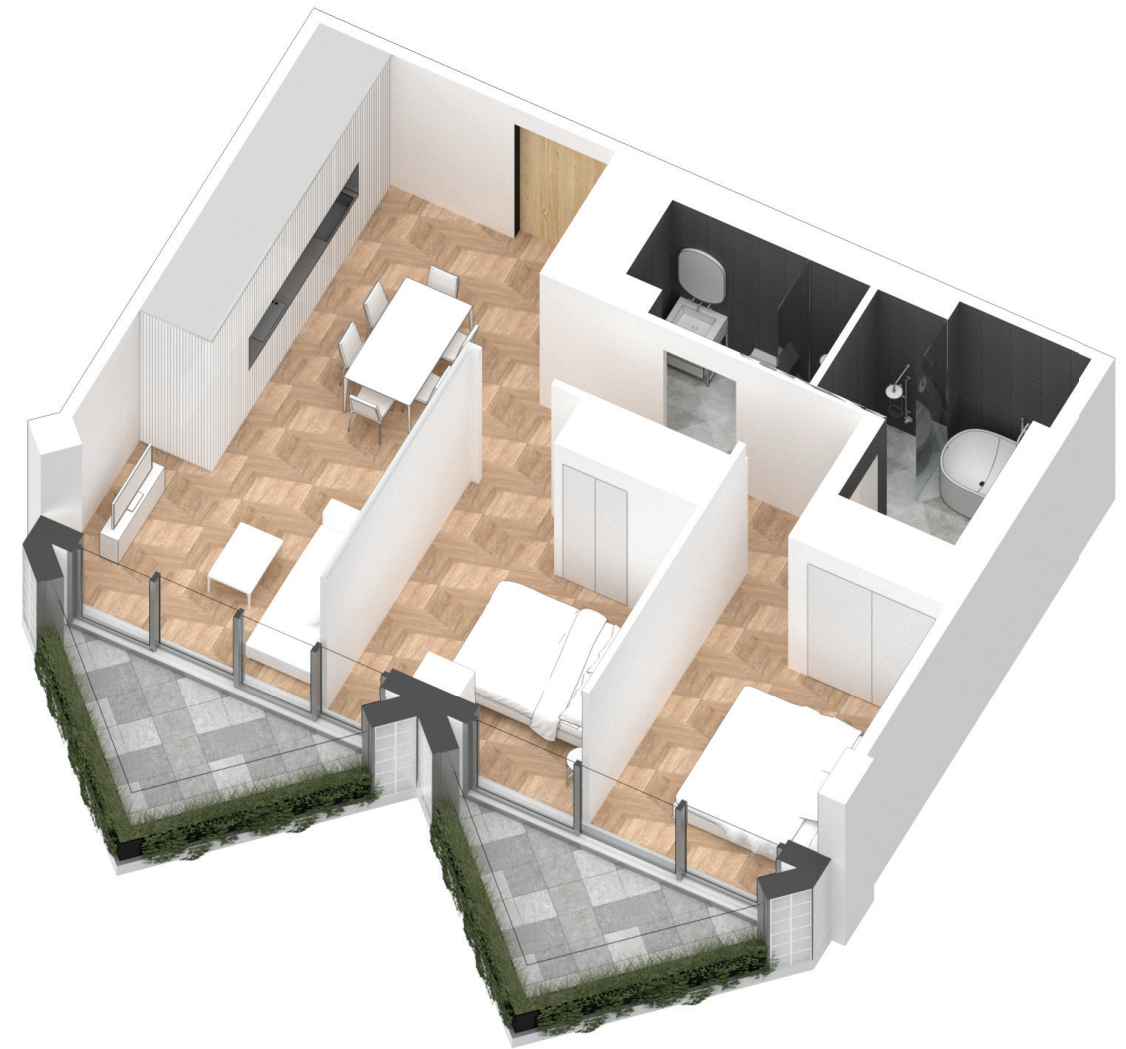
<b>LIVING</b>	11' 6" x 7' 8"
<b>DINING</b>	8' 6" x 14' 3"
<b>MASTER BD</b>	9' 9" x 9' 10"
<b>BEDROOM 2</b>	10' 11" x 9' 4"
<b>BALCONY</b>	13' 0" x 7' 9"

KING STREET WEST



COURTYARD

**EAST MOUNTAIN KEYPLAN**



All dimensions and specifications are approximate. Certain plans are reverse or mirror image. Balcony square footages are estimated and may vary from that stated. Please see Sales Representative for details. Furniture not included. Refer to key plan for unit location and orientation. E. & O.E.

# KING

## HOME 816 E



2BD.24

**2 Bedroom  
1 Bathroom**

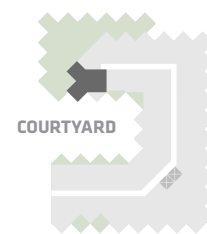
**Total Living:  
1156 ft<sup>2</sup>**

Interior Living:  
856 ft<sup>2</sup>

Exterior Living:  
300 ft<sup>2</sup>

<b>LIVING</b>	10' 7" X 11' 10"
<b>DINING</b>	10' 2" X 9' 3"
<b>MASTER BD</b>	9' 11" X 12' 0"
<b>BEDROOM 2</b>	11' 8" X 8' 6"
<b>TERRACE</b>	9' 1" X 6' 8"

KING STREET WEST



COURTYARD

**EAST MOUNTAIN KEYPLAN**



All dimensions and specifications are approximate. Certain plans are reverse or mirror image. Balcony square footages are estimated and may vary from that stated. Please see Sales Representative for details. Furniture not included. Refer to key plan for unit location and orientation. E. & O.E.

# KING

## HOME 901 E



2BD.03

**2 Bedroom  
2 Bathroom**

**Total Living:  
854 ft<sup>2</sup>**

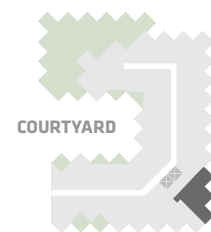
Interior Living:  
787 ft<sup>2</sup>

Exterior Living:  
67 ft<sup>2</sup>

<b>LIVING</b>	7' 7" X 9' 9"
<b>DINING</b>	8' 1" X 7' 9"
<b>MASTER BD</b>	10' 11" X 9' 10"
<b>BEDROOM 2</b>	9' 8" X 8' 9"
<b>BALCONY</b>	4' 11" X 9' 9"

KING STREET WEST

COURTYARD



**EAST MOUNTAIN KEYPLAN**



All dimensions and specifications are approximate. Certain plans are reverse or mirror image. Balcony square footages are estimated and may vary from that stated. Please see Sales Representative for details. Furniture not included. Refer to key plan for unit location and orientation. E. & O.E.

# KING

## HOME 902 E



2BD.04

**2 Bedroom  
2 Bathroom**

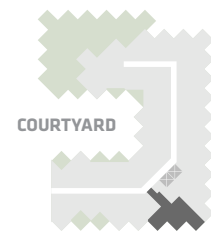
**Total Living:  
961 ft<sup>2</sup>**

Interior Living:  
894 ft<sup>2</sup>

Exterior Living:  
67 ft<sup>2</sup>

<b>LIVING</b>	9' 9" X 8' 11"
<b>DINING</b>	7' 2" X 14' 4"
<b>MASTER BD</b>	9' 10" X 11' 2"
<b>BEDROOM 2</b>	9' 3" X 10' 3"
<b>BALCONY</b>	9' 9" X 4' 11"

KING STREET WEST



**EAST MOUNTAIN KEYPLAN**



All dimensions and specifications are approximate. Certain plans are reverse or mirror image. Balcony square footages are estimated and may vary from that stated. Please see Sales Representative for details. Furniture not included. Refer to key plan for unit location and orientation. E. 6 O.E.



# KING

## HOME 907 E



2BD.05

**2 Bedroom  
2 Bathroom**

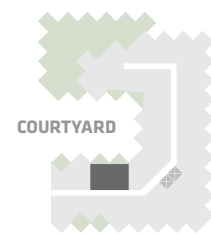
**Total Living:  
968 ft<sup>2</sup>**

Interior Living:  
791 ft<sup>2</sup>

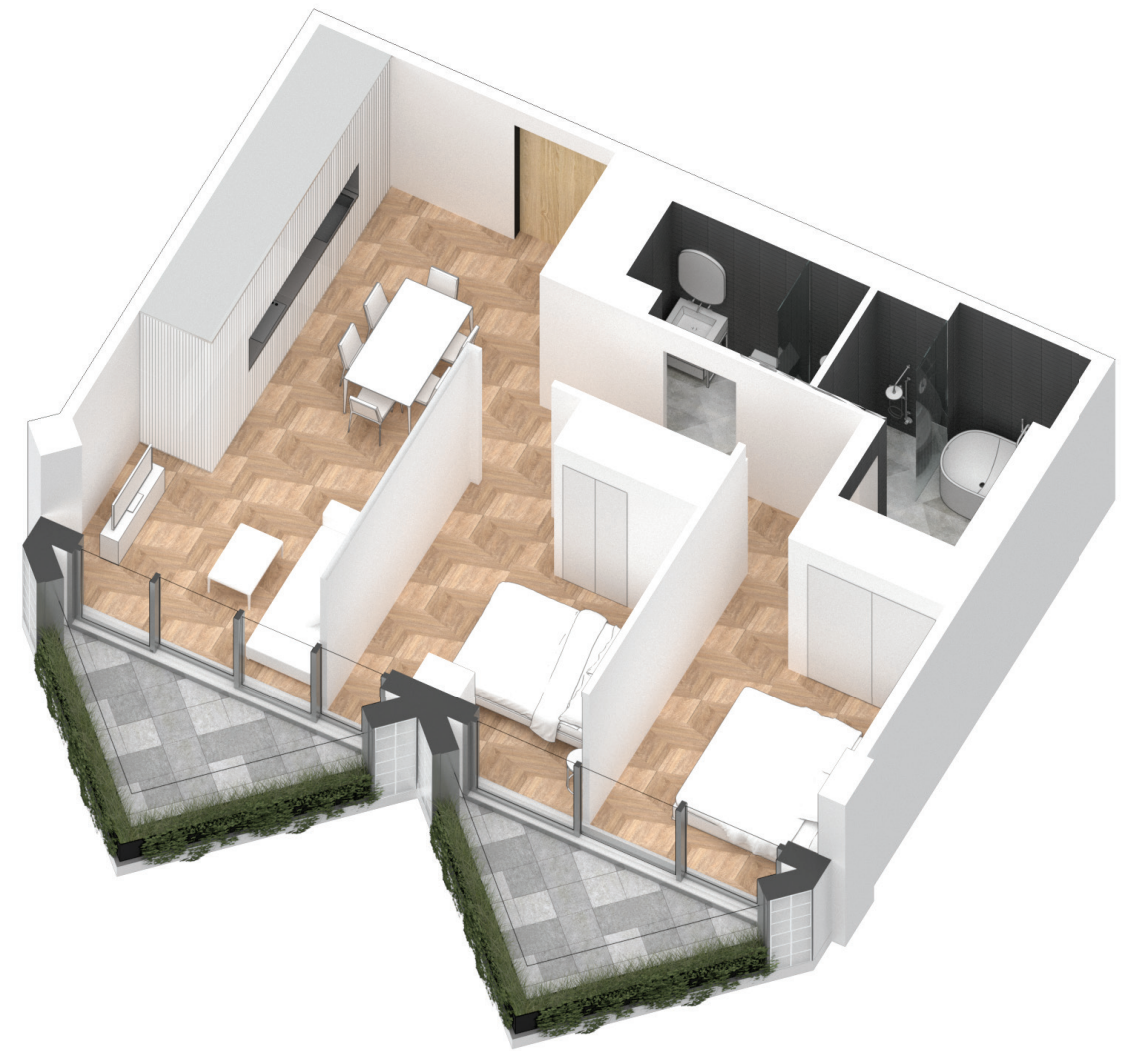
Exterior Living:  
177 ft<sup>2</sup>

<b>LIVING</b>	11' 6" x 7' 8"
<b>DINING</b>	8' 6" x 14' 3"
<b>MASTER BD</b>	9' 9" x 9' 10"
<b>BEDROOM 2</b>	10' 11" x 9' 4"
<b>BALCONY</b>	13' 0" x 7' 9"

KING STREET WEST



**EAST MOUNTAIN KEYPLAN**



All dimensions and specifications are approximate. Certain plans are reverse or mirror image. Balcony square footages are estimated and may vary from that stated. Please see Sales Representative for details. Furniture not included. Refer to key plan for unit location and orientation. E. & O.E.

# KING

## HOME 905 E



2BD.29

**2 Bedroom  
2 Bathroom**

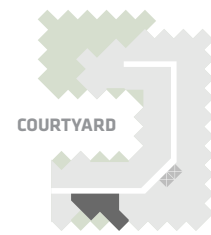
**Total Living:  
918 ft<sup>2</sup>**

Interior Living:  
846 ft<sup>2</sup>

Exterior Living:  
72 ft<sup>2</sup>

<b>LIVING</b>	12' 8" X 13' 0"
<b>DINING</b>	11' 2" X 6' 8"
<b>MASTER BD</b>	10' 10" X 11' 5"
<b>BEDROOM 2</b>	11' 2" X 9' 10"
<b>BALCONY</b>	11' 0" X 4' 11"

KING STREET WEST



COURTYARD

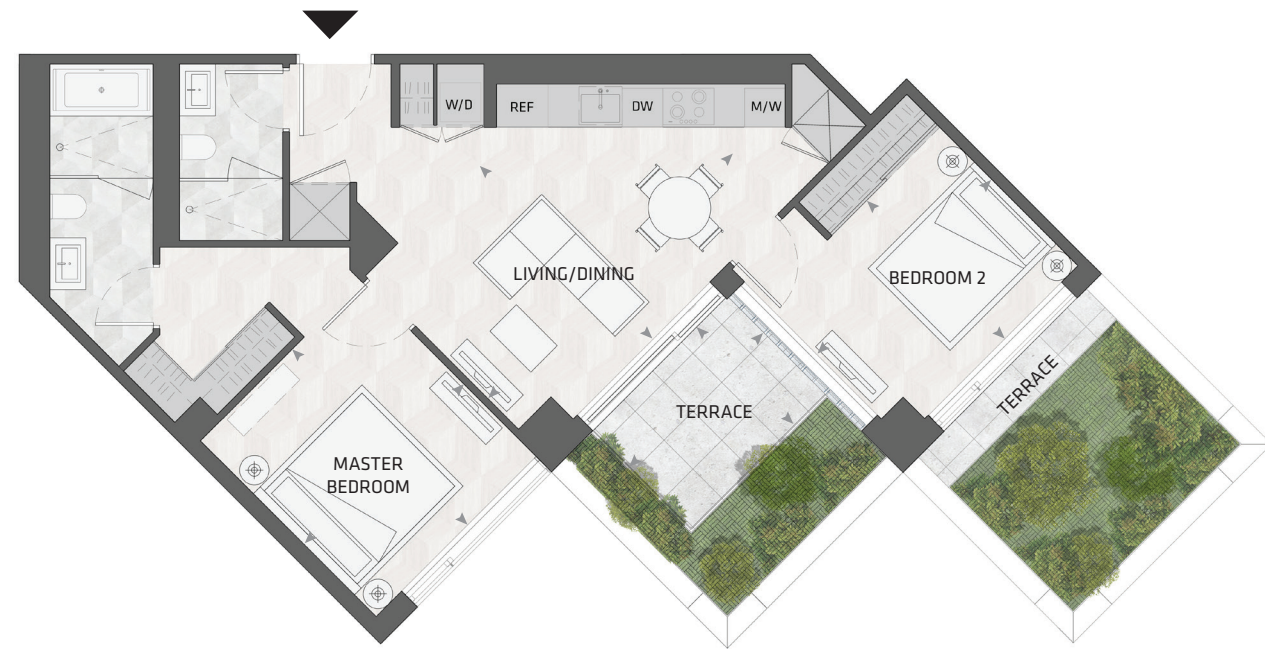
**EAST MOUNTAIN KEYPLAN**



All dimensions and specifications are approximate. Certain plans are reverse or mirror image. Balcony square footages are estimated and may vary from that stated. Please see Sales Representative for details. Furniture not included. Refer to key plan for unit location and orientation. E. & O.E.

# KING

## HOME 917 E



2BD.28

**2 Bedroom  
2 Bathroom**

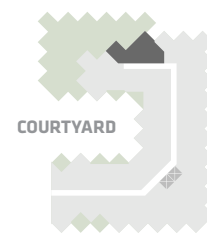
**Total Living:  
1167 ft<sup>2</sup>**

Interior Living:  
880 ft<sup>2</sup>

Exterior Living:  
287 ft<sup>2</sup>

<b>LIVING/ DINING</b>	16' 0" X 12' 0"
<b>MASTER BD</b>	10' 11" X 12' 0"
<b>BEDROOM 2</b>	11' 11" X 9' 5"
<b>TERRACE</b>	9' 1" X 6' 8"

KING STREET WEST



COURTYARD

**EAST MOUNTAIN KEYPLAN**



All dimensions and specifications are approximate. Certain plans are reverse or mirror image. Balcony square footages are estimated and may vary from that stated. Please see Sales Representative for details. Furniture not included. Refer to key plan for unit location and orientation. E. & O.E.

# KING

## HOME 1001 E



2BD.03

**2 Bedroom  
2 Bathroom**

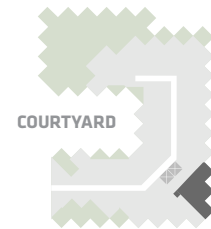
**Total Living:  
853 ft<sup>2</sup>**

Interior Living:  
787 ft<sup>2</sup>

Exterior Living:  
67 ft<sup>2</sup>

<b>LIVING</b>	7' 7" X 9' 9"
<b>DINING</b>	8' 1" X 7' 9"
<b>MASTER BD</b>	10' 11" X 9' 10"
<b>BEDROOM 2</b>	9' 8" X 8' 9"
<b>BALCONY</b>	4' 11" X 9' 9"

KING STREET WEST



**EAST MOUNTAIN KEYPLAN**



All dimensions and specifications are approximate. Certain plans are reverse or mirror image. Balcony square footages are estimated and may vary from that stated. Please see Sales Representative for details. Furniture not included. Refer to key plan for unit location and orientation. E. & O.E.

# KING

## HOME 1002 E



2BD.04

**2 Bedroom  
2 Bathroom**

**Total Living:  
961 ft<sup>2</sup>**

Interior Living:  
894 ft<sup>2</sup>

Exterior Living:  
67 ft<sup>2</sup>

<b>LIVING</b>	9' 9" X 8' 11"
<b>DINING</b>	7' 2" X 14' 4"
<b>MASTER BD</b>	9' 10" X 11' 2"
<b>BEDROOM 2</b>	9' 3" X 10' 3"
<b>BALCONY</b>	9' 9" X 4' 11"

KING STREET WEST

COURTYARD

**EAST MOUNTAIN KEYPLAN**



All dimensions and specifications are approximate. Certain plans are reverse or mirror image. Balcony square footages are estimated and may vary from that stated. Please see Sales Representative for details. Furniture not included. Refer to key plan for unit location and orientation. E. 6 O.E.

# KING

## HOME 1007 E



2BD.05

**2 Bedroom  
2 Bathroom**

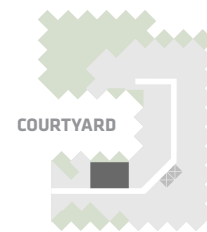
**Total Living:  
967 ft<sup>2</sup>**

Interior Living:  
790 ft<sup>2</sup>

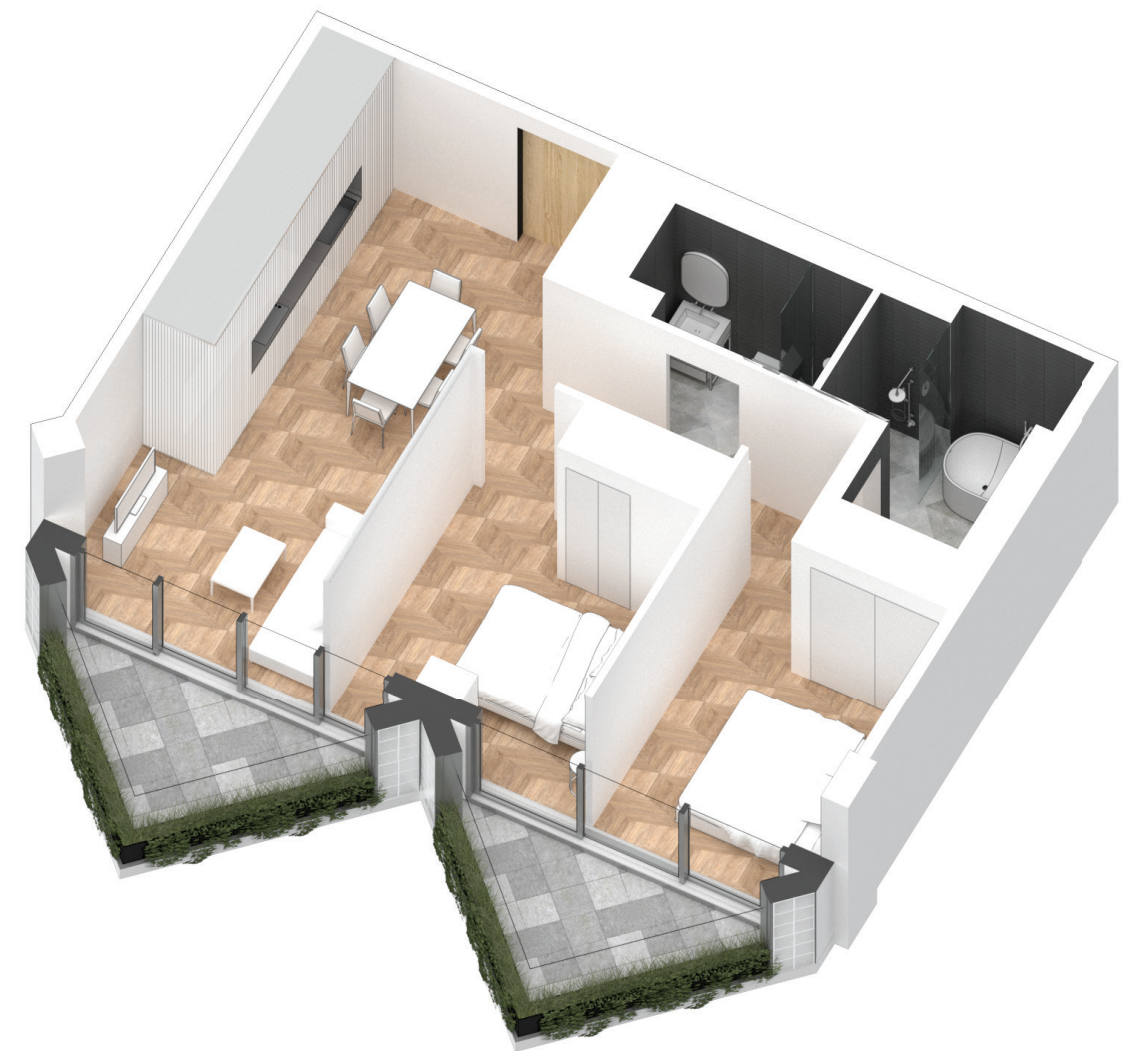
Exterior Living:  
178 ft<sup>2</sup>

<b>LIVING</b>	11' 6" x 7' 8"
<b>DINING</b>	8' 6" x 14' 3"
<b>MASTER BD</b>	9' 9" x 9' 10"
<b>BEDROOM 2</b>	10' 11" x 9' 4"
<b>BALCONY</b>	13' 0" x 7' 9"

KING STREET WEST



**EAST MOUNTAIN KEYPLAN**



All dimensions and specifications are approximate. Certain plans are reverse or mirror image. Balcony square footages are estimated and may vary from that stated. Please see Sales Representative for details. Furniture not included. Refer to key plan for unit location and orientation. E. & O.E.

# KING

## HOME 1102 E



2BD.04

**2 Bedroom  
2 Bathroom**

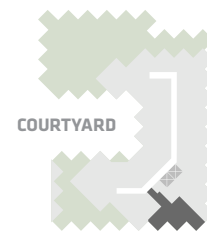
**Total Living:  
961 ft<sup>2</sup>**

Interior Living:  
894 ft<sup>2</sup>

Exterior Living:  
67 ft<sup>2</sup>

<b>LIVING</b>	9' 9" X 8' 11"
<b>DINING</b>	7' 2" X 14' 4"
<b>MASTER BD</b>	9' 10" X 11' 2"
<b>BEDROOM 2</b>	9' 3" X 10' 3"
<b>BALCONY</b>	9' 9" X 4' 11"

KING STREET WEST



**EAST MOUNTAIN KEYPLAN**



All dimensions and specifications are approximate. Certain plans are reverse or mirror image. Balcony square footages are estimated and may vary from that stated. Please see Sales Representative for details. Furniture not included. Refer to key plan for unit location and orientation. E. & O.E.

# KING

## HOME 1510 E



2BD.09

**2 Bedroom  
2 Bathroom**

**Total Living:  
1035 ft<sup>2</sup>**

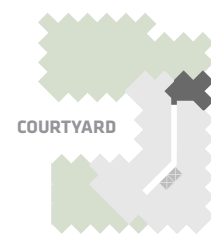
Interior Living:  
892 ft<sup>2</sup>

Exterior Living:  
143 ft<sup>2</sup>

<b>LIVING</b>	12' 0" X 11' 9"
<b>DINING</b>	11' 0" X 9' 9"
<b>MASTER BD</b>	12' 0" X 9' 5"
<b>BEDROOM 2</b>	11' 2" X 9' 1"
<b>TERRACE</b>	9' 1" X 9' 1"

KING STREET WEST

COURTYARD



**EAST MOUNTAIN KEYPLAN**



All dimensions and specifications are approximate. Certain plans are reverse or mirror image. Balcony square footages are estimated and may vary from that stated. Please see Sales Representative for details. Furniture not included. Refer to key plan for unit location and orientation. E. & O.E.



# KING

## HOME 1101 E



2BD.03

**2 Bedroom  
2 Bathroom**

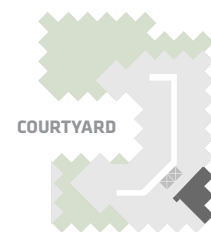
**Total Living:  
854 ft<sup>2</sup>**

Interior Living:  
787 ft<sup>2</sup>

Exterior Living:  
67 ft<sup>2</sup>

<b>LIVING</b>	7' 7" X 9' 9"
<b>DINING</b>	8' 1" X 7' 9"
<b>MASTER BD</b>	10' 11" X 9' 10"
<b>BEDROOM 2</b>	9' 8" X 8' 9"
<b>BALCONY</b>	4' 11" X 9' 9"

KING STREET WEST



**EAST MOUNTAIN KEYPLAN**



All dimensions and specifications are approximate. Certain plans are reverse or mirror image. Balcony square footages are estimated and may vary from that stated. Please see Sales Representative for details. Furniture not included. Refer to key plan for unit location and orientation. E. 6 O.E.

# KING

## HOME 1201 E



2BD.03

**2 Bedroom  
2 Bathroom**

**Total Living:  
854 ft<sup>2</sup>**

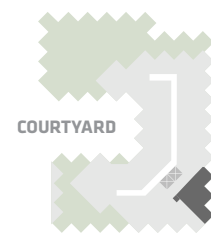
Interior Living:  
787 ft<sup>2</sup>

Exterior Living:  
67 ft<sup>2</sup>

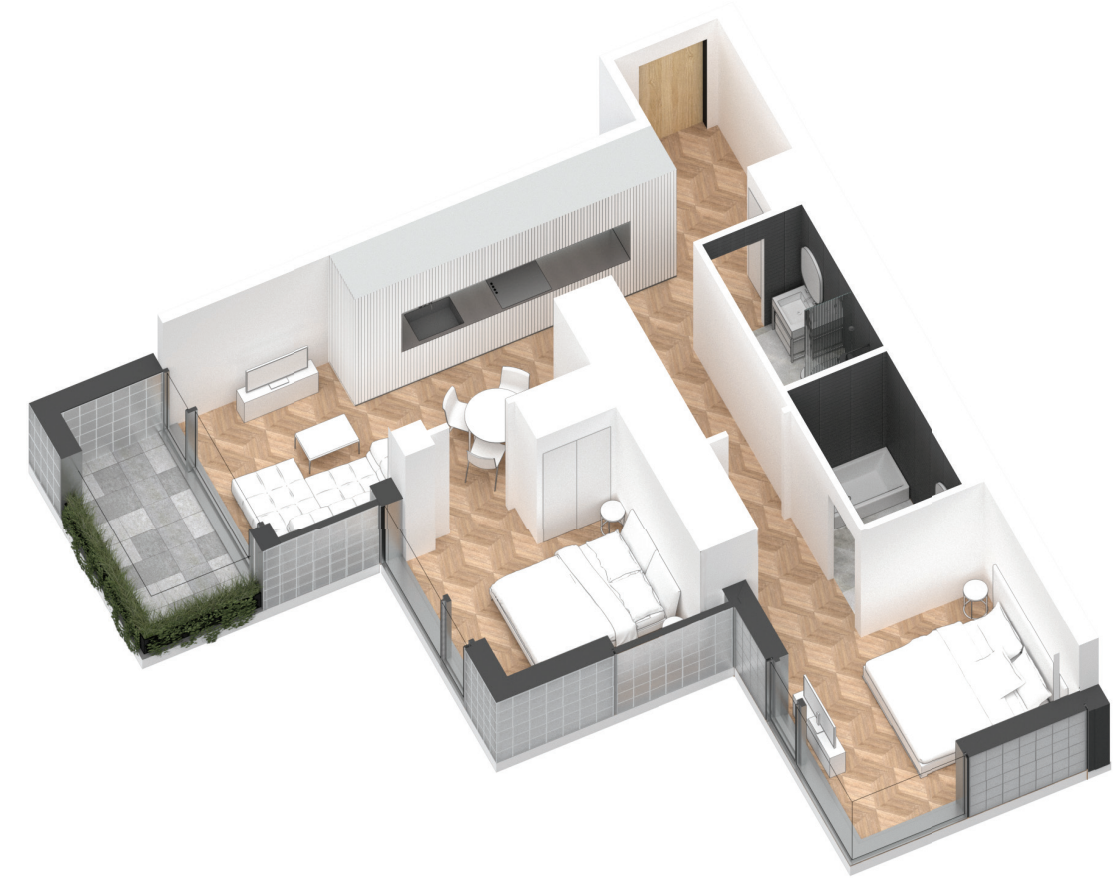
<b>LIVING</b>	7' 7" X 9' 9"
<b>DINING</b>	8' 1" X 7' 9"
<b>MASTER BD</b>	10' 11" X 9' 10"
<b>BEDROOM 2</b>	9' 8" X 8' 9"
<b>BALCONY</b>	4' 11" X 9' 9"

KING STREET WEST

COURTYARD



**EAST MOUNTAIN KEYPLAN**



All dimensions and specifications are approximate. Certain plans are reverse or mirror image. Balcony square footages are estimated and may vary from that stated. Please see Sales Representative for details. Furniture not included. Refer to key plan for unit location and orientation. E. & O.E.

# KING

## HOME 1202 E



2BD.04

**2 Bedroom  
2 Bathroom**

**Total Living:  
961 ft<sup>2</sup>**

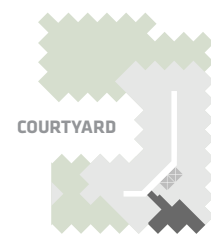
Interior Living:  
895 ft<sup>2</sup>

Exterior Living:  
67 ft<sup>2</sup>

<b>LIVING</b>	9' 9" X 8' 11"
<b>DINING</b>	7' 2" X 14' 4"
<b>MASTER BD</b>	9' 10" X 11' 2"
<b>BEDROOM 2</b>	9' 3" X 10' 3"
<b>BALCONY</b>	9' 9" X 4' 11"

KING STREET WEST

COURTYARD



**EAST MOUNTAIN KEYPLAN**



All dimensions and specifications are approximate. Certain plans are reverse or mirror image. Balcony square footages are estimated and may vary from that stated. Please see Sales Representative for details. Furniture not included. Refer to key plan for unit location and orientation. E. 6 O.E.

# KING

## HOME 1212 E



2BD.46

**2 Bedroom  
2 Bathroom**

**Total Living:  
884 ft<sup>2</sup>**

Interior Living:  
812 ft<sup>2</sup>

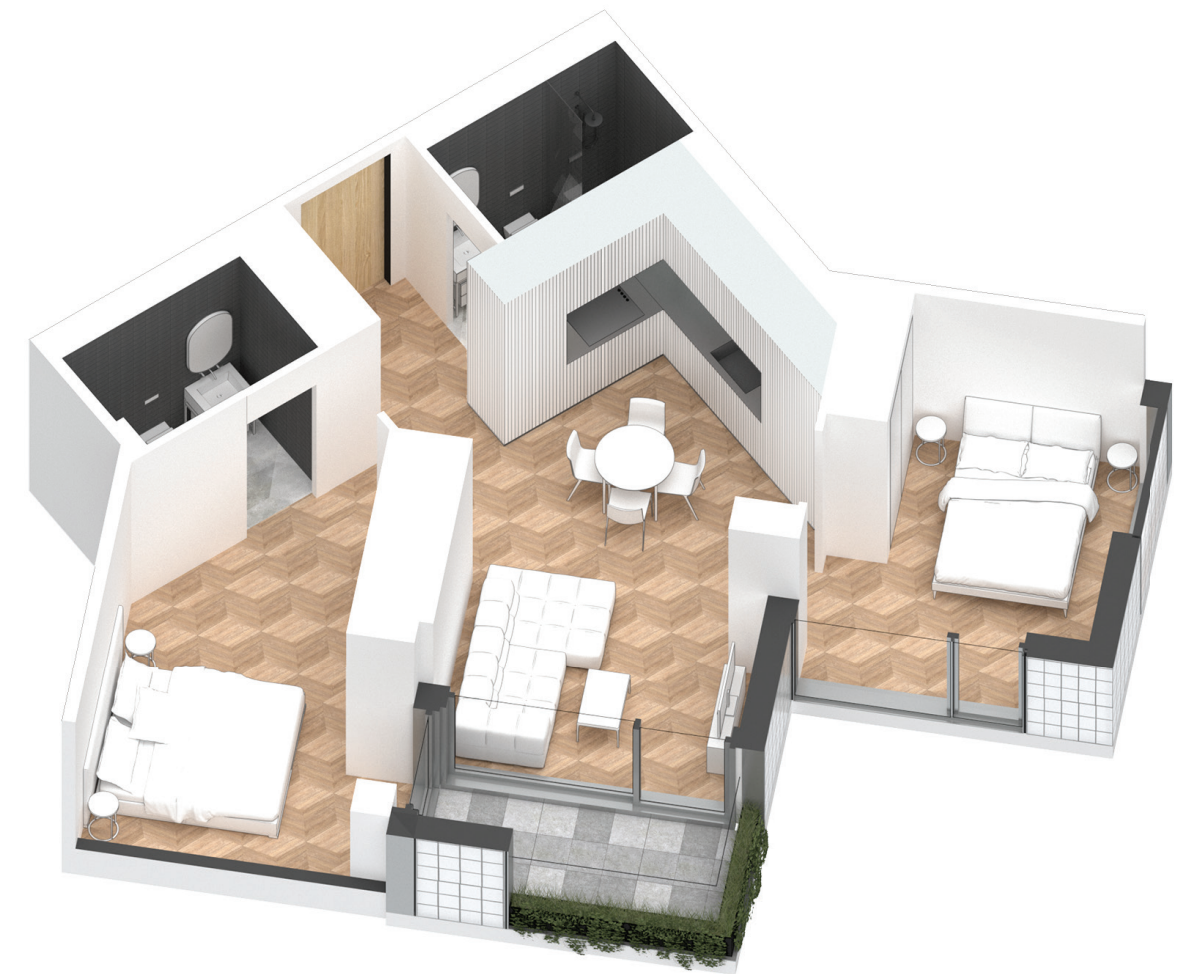
Exterior Living:  
72 ft<sup>2</sup>

<b>LIVING</b>	8' 10" X 11' 5"
<b>DINING</b>	10' 1" X 7' 2"
<b>MASTER BD</b>	12' 2" X 9' 1"
<b>BEDROOM 2</b>	11' 5" X 8' 6"
<b>BALCONY</b>	4' 11" X 11' 0"

KING STREET WEST

COURTYARD

**EAST MOUNTAIN KEYPLAN**



All dimensions and specifications are approximate. Certain plans are reverse or mirror image. Balcony square footages are estimated and may vary from that stated. Please see Sales Representative for details. Furniture not included. Refer to key plan for unit location and orientation. E. & O.E.

# KING

## HOME 1501 E



2BD.03

**2 Bedroom  
2 Bathroom**

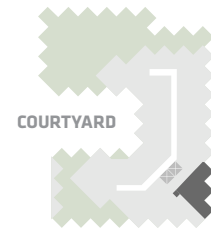
**Total Living:  
854 ft<sup>2</sup>**

Interior Living:  
787 ft<sup>2</sup>

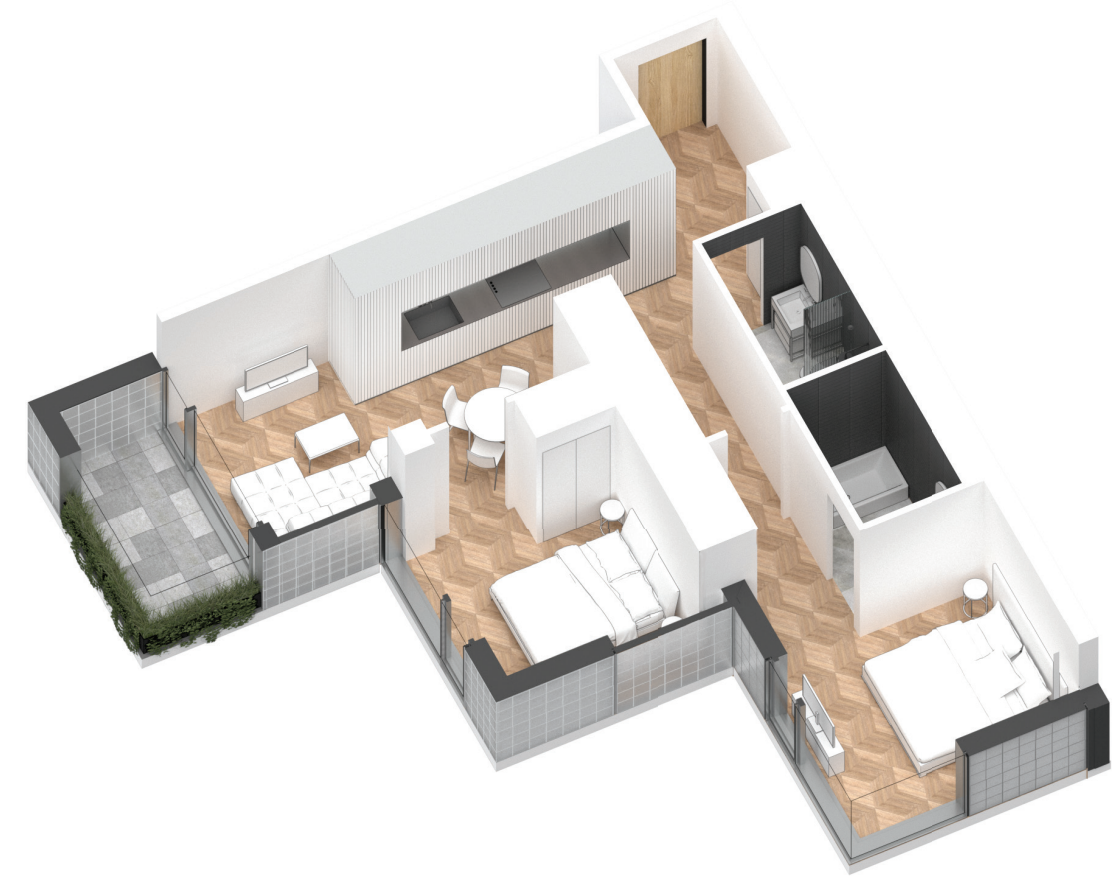
Exterior Living:  
67 ft<sup>2</sup>

<b>LIVING</b>	7' 7" X 9' 9"
<b>DINING</b>	8' 1" X 7' 9"
<b>MASTER BD</b>	10' 11" X 9' 10"
<b>BEDROOM 2</b>	9' 8" X 8' 9"
<b>BALCONY</b>	4' 11" X 9' 9"

KING STREET WEST



**EAST MOUNTAIN KEYPLAN**



All dimensions and specifications are approximate. Certain plans are reverse or mirror image. Balcony square footages are estimated and may vary from that stated. Please see Sales Representative for details. Furniture not included. Refer to key plan for unit location and orientation. E. 6 O.E.

# KING

## HOME 1601 E



2BD.03

**2 Bedroom  
2 Bathroom**

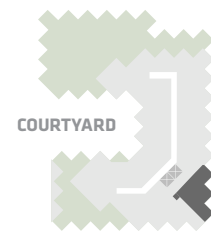
**Total Living:  
855 ft<sup>2</sup>**

Interior Living:  
790 ft<sup>2</sup>

Exterior Living:  
65 ft<sup>2</sup>

<b>LIVING</b>	7' 7" X 9' 9"
<b>DINING</b>	8' 1" X 7' 9"
<b>MASTER BD</b>	10' 11" X 9' 10"
<b>BEDROOM 2</b>	9' 8" X 8' 9"
<b>BALCONY</b>	4' 11" X 9' 9"

KING STREET WEST



**EAST MOUNTAIN KEYPLAN**



All dimensions and specifications are approximate. Certain plans are reverse or mirror image. Balcony square footages are estimated and may vary from that stated. Please see Sales Representative for details. Furniture not included. Refer to key plan for unit location and orientation. E. & O.E.

# KING

## HOME 1602 E



2BD.04

**2 Bedroom  
2 Bathroom**

**Total Living:  
959 ft<sup>2</sup>**

Interior Living:  
894 ft<sup>2</sup>

Exterior Living:  
65 ft<sup>2</sup>

<b>LIVING</b>	9' 9" X 8' 11"
<b>DINING</b>	7' 2" X 14' 4"
<b>MASTER BD</b>	9' 10" X 11' 2"
<b>BEDROOM 2</b>	9' 3" X 10' 3"
<b>BALCONY</b>	9' 9" X 4' 11"

KING STREET WEST

COURTYARD

**EAST MOUNTAIN KEYPLAN**



All dimensions and specifications are approximate. Certain plans are reverse or mirror image. Balcony square footages are estimated and may vary from that stated. Please see Sales Representative for details. Furniture not included. Refer to key plan for unit location and orientation. E. 6 O.E.

# KING

## HOME 1502 E



2BD.04

**2 Bedroom  
2 Bathroom**

**Total Living:  
959 ft<sup>2</sup>**

Interior Living:  
892 ft<sup>2</sup>

Exterior Living:  
67 ft<sup>2</sup>

<b>LIVING</b>	9' 9" X 8' 11"
<b>DINING</b>	7' 2" X 14' 4"
<b>MASTER BD</b>	9' 10" X 11' 2"
<b>BEDROOM 2</b>	9' 3" X 10' 3"
<b>BALCONY</b>	9' 9" X 4' 11"

KING STREET WEST

COURTYARD

**EAST MOUNTAIN KEYPLAN**



All dimensions and specifications are approximate. Certain plans are reverse or mirror image. Balcony square footages are estimated and may vary from that stated. Please see Sales Representative for details. Furniture not included. Refer to key plan for unit location and orientation. E. & O.E.



# KING

## HOME 1603 E



2BD.64

**2 Bedroom  
2 Bathroom**

**Total Living:  
1048 ft<sup>2</sup>**

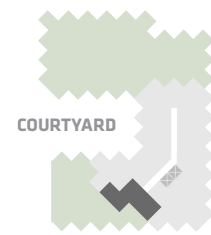
Interior Living:  
905 ft<sup>2</sup>

Exterior Living:  
143 ft<sup>2</sup>

<b>LIVING</b>	13' 5" x 11' 7"
<b>DINING</b>	12' 4" x 10' 10"
<b>MASTER BD</b>	11' 10" x 9' 8"
<b>BEDROOM 2</b>	8' 11" x 11' 8"
<b>TERRACE</b>	6' 8" x 9' 1"

KING STREET WEST

COURTYARD



**EAST MOUNTAIN KEYPLAN**



All dimensions and specifications are approximate. Certain plans are reverse or mirror image. Balcony square footages are estimated and may vary from that stated. Please see Sales Representative for details. Furniture not included. Refer to key plan for unit location and orientation. E. & O.E.

# KING

## HOME 1610 E



2BD.46

**2 Bedroom  
1 Bathroom**

**Total Living:  
885 ft<sup>2</sup>**

Interior Living:  
813 ft<sup>2</sup>

Exterior Living:  
72 ft<sup>2</sup>

<b>LIVING</b>	8' 10" X 11' 5"
<b>DINING</b>	10' 1" X 7' 2"
<b>MASTER BD</b>	12' 2" X 9' 1"
<b>BEDROOM 2</b>	11' 5" X 8' 6"
<b>BALCONY</b>	4' 11" X 11' 0"

KING STREET WEST

COURTYARD

**EAST MOUNTAIN KEYPLAN**



All dimensions and specifications are approximate. Certain plans are reverse or mirror image. Balcony square footages are estimated and may vary from that stated. Please see Sales Representative for details. Furniture not included. Refer to key plan for unit location and orientation. E. & O.E.